



WETSULF[®] 80WP



FUNGICIDE

Guarantee: **Sulphur 800g/kg**
 Formulation: **Wettable powder**
 Classification: **Multi-site inorganic fungicide**

General Description

WETSULF 80WP is a non-systemic protective fungicide with contact and vapour action. It is a micronized wettable formulation of Sulphur that also has secondary acaricidal activity.

WETSULF is primarily used for the control powdery mildew and scab on flowers, vegetables, vines and fruit trees.

Mode of Action

Non-specific thiol reactant, inhibiting respiration. Non-systemic protective fungicide with contact and vapour action.

Main Features and Benefits

- Majority of the sulphur particles range between 3-5 microns for maximum fungicidal effect.
- Contact action inhibits spore germination.
- Has secondary advantage of reducing mite populations.
- Supplies sulphur (an essential plant nutrient).
- No build-up of resistance by either pathogens or mites.

Recommended Application Rates

Crop	Rates		Interval
Flowers e.g. Roses	40-60g/20Lt	2-3kg/ha	7-10 days
Vegetables	40-60g/20Lt	2-3kg/ha	7-10 days
Coffee	40-80g/20Lt	2-4kg/ha	7-10 days
Citrus	40-160g/20Lt	2-8kg/ha	7-10 days

Pre-harvest Interval: 1 day.

Other Suggested Uses

Crop	Diseases	Remarks
Apples, Pears, and Peaches	Scab	Protective Action
Fruit, Vines, Cereals, Citrus Ornamentals, Cucumbers, Vegetables, and in Forestry.	Powdery mildews	Protective Action

Compatibility:

Avoid mixing with oils.

Phytotoxicity:

Care should be taken when applying to cucurbits and other 'sulfur-shy' varieties.



Powdery mildew (Roses)



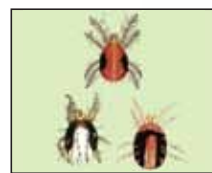
Powdery mildew (Roses)



Powdery mildew
(Tomato)



Scab



SpiderMites

Osho Chemical Industries Ltd.

Industrial Area Office: Osho Complex, Sasio Rd. off Lunga lunga, Industrial Area

Postal Address: P. O. Box 49916 - GPO 00100 Nbi-Kenya

Pilot Line: (+254) 020 391 2000, (+254) 0711-045 000, (+254) 0733-880 480

Customer Service: (+254) 020 391 2500, (+254) 0711-045 500 **Fax:** (+254) 020 3912600, (+254) 0711-045 600

E-mail: oshochem@oshochem.com **Website:** www.oshochem.com

