



WHO CLASS III

# MASTER<sup>®</sup> 72 WP

FUNGICIDE



Guarantee: **Metalaxyl 8% w/w**  
**Mancozeb 64% w/w**  
 Formulation: **Wettable Powder**  
 Classification: **Phenylamide: Acylalanine**  
*Plus Dithiocarbamate*

### General Description

MASTER 72WP is a systemic and contact fungicide for the control of a wide range of fungal diseases on a variety of crops. It combines two active ingredients (Metalaxyl & Mancozeb) at high concentrations for superior disease control.

MASTER is readily and rapidly absorbed through the leaves, stems, and roots. It offers crops superior protective control as well as curative action in cases where disease incidence has already occurred at the time of application. This product can be used to control diseases caused by air- and soil-borne pathogens.

### Mode of Action

#### Metalaxyl:

- Inhibits protein synthesis in fungi, thus preventing growth and reproduction.

#### Mancozeb:

- Non-specific thiol reactant, inhibiting respiration.
- Fungicide with protective action that inhibits spore germination.

### Recommended Application Rates

Crop	Diseases	Rates	Spray Interval
Potatoes & Tomatoes	Early blight, Late blight	50-60 g/20L	14 days in normal weather and 7 days in harsh weather
Snowpeas	Downy mildew, Ascochyta	50g / 20L 2.5kg/ha	
Pepper	Anthracoze, Cercospora leaf spot	50g / 20L 2.5kg/ha	
Squash	Downy mildew	50g / 20L 2.5kg/ha	
Cabbages	Dark leaf spot, Downy mildew	50g / 20L 2.5kg/ha	
Roses	Downy mildew	200g in 100Lt of water	

**Pre-harvest Interval:** : Tomatoes 3 days; Potatoes 14 days, Brassica 7 days, Squash 3 days.

### Other Suggested Uses

Crop	Diseases	Rates
Field crops, Fruits, Nuts, Ornamentals	Early & Late blight, leaf spot, downy mildew, scab, etc.	2.5kg/ha
Vines, onions, leeks, lettuce, cucurbits & tobacco	Downy mildews	
Bananas	Sigatoka disease	
Beans and cucurbits	Anthracoze	
Vegetables	Damping-off Early & Late blight, leaf spot, downy mildew, scab	
Citrus, avocado & pineapple	Stem and root rots	
Roses	Stem & flower botrytis	

#### Phytotoxicity:

Non-phytotoxic to most crops when used as recommended.

NB: Always try for varietal tolerance on ornamentals.

#### Compatibility:

Compatible with most commonly used pesticides except lime sulphur, bordeaux mixture and others alkaline in nature.



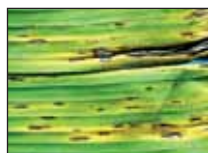
Ascochyta (Peas)



Downy Mildew (Rose)



Late Blight (Potato)



Sigatoka (Banana)



Botrytis (Rose)

### Osho Chemical Industries Ltd.

**Industrial Area Office:** Osho Complex, Sasio Rd. off Lunga Lunga, Industrial Area

**Postal Address:** P. O. Box 49916 - GPO 00100 Nbi-Kenya

**Pilot Line:** (+254) 020 391 2000, (+254) 0711-045 000, (+254) 0733-880 480

**Customer Service:** (+254) 020 391 2500, (+254) 0711-045 500 **Fax:** (+254) 020 3912600, (+254) 0711-045 600

**E-mail:** oshochem@oshochem.com **Website:** www.oshochem.com

