

MATCO[®] 72

FUNGICIDE WETTABLE POWDER

MAELEZO: MATCO[®] 72WP ni kiuva kuvu kinachozuia na kuangamiza magonjwa ya kuvu kwa kupenya ndani ya mimea au kwa mguso katika waridi.

JINSI IFANYAVYO KAZI: MATCO[®] 72WP ina Metalaxyl ambayo huenea haraka ndani ya mmea na huulinda kutokana na kuvu pamoja na kuponya pia ina Mancozeb ambayo huzaia magonjwa ya kuvu.

MAELEZO JUU YA MATUMIZI: MATCO[®] 72WP inafaa kununyiziwa kwa kuzuia magonjwa wakati hali ya anga inasaidia mashambulizi kutokea na kurudiwa kulingana na mashambulizi. Mashambulizi yakizidi rudia baada ya siku saba. Nyunyizia MATCO[®] 72WP mara tatu halafu badilisha na madawa mengine ya kuvu.

Kunyunyizia: Changanya gramu 50 - 60 za MATCO[®] 72WP kwa bomba au debe ya lita 20 za maji. Tumia bomba au debe 20 kwa hekta (LiTa 400 kwa hektari)

VIPIMO VYA MATUMIZI

Mimea	Magonjwa	Kipimo
Waridi	Downy mildew	gramu 250 - 300/lita 100 za maji gramu 50 - 60/lita20 za maji (2.5 - 3.0 Kilo/Hektari)

MUDA SALAMA WA KUNINGIA PAHALI PALIPONYUNYIZIWA DAWA: Masaa 12.

HADHARI: Kumbuka kutumia kiwango cha chini cha kipimo iwapo/wakati mashambulizi ya ugonjwa ni ya chini.

Waridi: Unashauriwa kufanya majaribio ya ustahimilifu kwenye mimea michache.

MWONGOZO WA KUNYUNYIZA: Ongeza maji kwa kiasi kifaacho cha MATCO[®] 72WP na kukoroga vizuri ili ichanganyike. Ongeza kiasi kilichosalia cha maji na kuendelea kukoroga hata wakati wa kununyiziwa

TAHADHARI KWA MTUMIZI: Usilie, Kunywa, wala kuvuta sigara unapoitumia dawa hii. Vaa mavazi ya kinga, pamoja na barakoa mifuko ya mikono, miwani na gumboos wakati wa kutayarisha na kununyiziwa dawa hii.

UHIFADHI NA UTUPAJI: Hifadhi dawa kwenye pochii lake asili lililofunikwa pahali penye baridi mbali na watoto, vyakula, wanyama na vyanzo vya moto. Pochii tupu la dawa yataa kusafishwa mara tatu, na maji hayo kumwagwa kwenye bomba la mchanganyiko wa dawa. Tupa pochii tupu mahali palipo salama na paliporuhusiwa, mbali na makao ya watu na vianzo vya maji, kulingana na sheria za utupaji. Usitumie pochii tupu kwa matumizi mengine yeyote.

MADHARA KWA MAZINGIRA: Dawa hii ni sumu kwa nyuki na samaki. Usinyunyizie dawa nyuki wanapotafuta chakula. Dawa ama mabaki yake yasichafue vidimbwi au mito.

MAELEZO YA HUDUMA YA KWANZA: Ikiingia kwenye macho: Yasafishe kwa maji yanayotiririka kwa muda wa dakika 15-20 huku ukiyaacha wazi. Ikiingia na ngozi: Safisha ngozi kwa maji mengi na sabuni. Ikiingia kwa:

Mtapishe mgonjwa iwapo tu hajazirai na upate ushauri wa daktari mara moja HABARI KUHUSU SUMU: DALILI ZA KUSUMIKA: "sedation dyspnea, exaphtmus, curved posture" PELEKA MJERUHI KWA DAKTARI.

Tiba ya sumu: Haina tiba maalum

Arifa kwa daktari: Tibu kulingana na dalili za sumu

Wakati wa dharura piga simu bila malipo-0800720021/0800730030 (masaa 24)

ILANI KWA MTUMIAJI: Dawa hii sharti itumiwe kulingana na maagizo yaliyo kwenye kibandiko. Ni hatia chini ya sheria za madawa ya kuangamiza wadudu waharibifu kutumia au kuhifadhi dawa hii katika hali isiyu salama.

THIBITISHO: Dhamana ya muuzaji ni maelezo yaliyo kwenye kibandiko, ambayo ni lazima yafuatwe kikamilifu. Mnuuzi lazima akubali hatari zozote zinazoweza kutokana na matumizi ya dawa hii kwa binadamu au mali na lazima aikubali dawa hii katika hali hiyo.



MATCO[®] 72

FUNGICIDE WETTABLE POWDER

In case of an Emergency call Toll Free No. (24 hrs)
(Wakati wa Dharura piga Simu bila malipo
(masaa 24)
0800720021 / 0800730030

**Fungicide for
the control of
downy mildew
in Roses. (Kiuva
kuvu cha kuzuia
na kudhibiti
downy mildew
kwenye waridi).**

Distributed by (Husambazwa na):

**OSHO CHEMICAL
INDUSTRIES LTD.**

P. O. Box 49916 00100 Nbi, Kenya
Pilot lines:
[+254] 0711 045000 | 0732 167000
0726 880 480 | 0733 880 480
SMS: 20560 | Fax: [+254] 0711 045600
E-mail: oshochem@oshochem.com
Web: www.oshochem.com

Manufacturer (Imetengenezwa na):
INDOPIL INDUSTRIES LTD.
Nirilon Hse, Dr. Annie
Besant Rd., Worli
Mumbai - 400 030
INDIA

MEMBER OF
AGROCHEMICAL
ASSOCIATION
OF KENYA
AAK REG. NO. 275

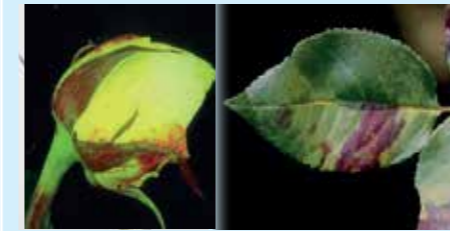
**COMMERCIAL AND AGRICULTURAL CLASS
(SEHEMU YA BIAHARA NA KILIMO)**

**GUARANTEE (DHAMANA)
Metalaxyl 80g/kg + Mancozeb 640g/kg**

**REGISTRATION NO. (NAMBARI YA USAJILI):
PCPB (CR) 1338**

**READ THE LABEL BEFORE USING
(SOMA KIBANDIKO KABLA YA KUTUMIA)**

**KEEP LOCKED AND OUT OF REACH
OF CHILDREN
(FUNGIA MBALI NA WATOTO)**



Batch No. (Nambari ya fungu):
Mfg Date (Tarehe ya kutengenezwa):
Expiry Date (Tumia kabla ya):

Shelf Life (Maisha Rafuni):
2 years in original unopened container stored in a cool, dry & dark place (Miaka miwili toka tarehe ya kutengenezwa ikiwa kwenye chombo chake asili kisichofunguliwa kwenye sehemu tulivu na kavu.)

**NET CONTENTS:
(KIASI)
1Kg**



**CAUTION
(ILANI)**

DESCRIPTION: MATCO[®] 72WP is a systemic and contact fungicide for the control of downy mildew in Roses
MODE OF ACTION: MATCO[®] 72WP has Metalaxyl which is a systemic fungicide with protective and curative action. It is readily and rapidly translocated throughout the plant where it controls the fungi. The Mancozeb component gives MATCO[®] 72WP contact protective antifungicidal activity by inhibiting spore germination.

DIRECTIONS FOR USE: MATCO[®] 72WP must be applied preventatively when weather conditions favour disease development (humid and damp) and repeated as necessary. Under high disease pressure, a 7 day spray interval is recommended. Should there be need to change to contact fungicide this should be done within 7-10 days of the last application of MATCO 72WP. In roses use a maximum of 3 sprays then change over to a contact fungicide.

Spraying: Hand operated knapsack (small holders): Mix 50 - 60g of MATCO[®] 72WP for every debe (20Litre) of water to be used. Use at least 20 debes full of spray mixture per Ha (400Ltrs/ha).

RATES OF APPLICATION

Crop	Diseases	Rates
Roses	Downy mildew	250 - 300g / 100Ltrs of water 50 - 60g / 20Ltrs of water (2.5 - 3.0 kg/ha)

RE-ENTRY PERIOD: 12 hours

NB: Use the lower rate during low disease severity.

Roses: Always try for varietal tolerance on a few plants before large scale use.

Spray Preparation: Mix the required quantity of MATCO 72WP with enough water to make a slurry. Add the remaining volume or water while agitating/stirring even when spraying.

HANDLING PRECAUTION: Do not eat, or smoke when handling this product. Wear protective clothing including dust masks, gloves and face shields. Wash contaminated clothing before reuse.

STORAGE AND DISPOSAL: Store product tightly closed in original Pouch, in a cool (avoid storage above 35°C) dry, dark and well ventilated place, away from children, food stuff and livestock. Triple rinse empty pouch and add washings to spray mixture, then dispose empty pouch in a safe and authorised place away from human habitation and water sources, in accordance with national regulations and legislation. Do not reuse pouch for any other purpose.

ENVIRONMENTAL HAZARDS: Toxic to fish and bees, do not contaminate ponds or water sources with product, it's concentrate or empty containers. Avoid spraying when bees are actively foraging. Keep livestock out of freshly sprayed herbage.

FIRST AID INSTRUCTIONS: If in contact with eyes: wash with plenty of water for 15-20 minutes. If in contact with skin: wash with plenty of water and soap. If inhaled: Remove the victim to fresh air and call for medical attention. Assist breathing if necessary. If Ingested: wash out mouth, induce vomiting but only if victim is conscious. Seek medical attention immediately.

TOXICOLOGICAL INFORMATION: Symptoms of poisoning: These include sedation dyspnea, exaphtalmus, curved posture. SEEK MEDICAL ATTENTION.

Antidote: No specific antidote.

Note to Physician: Symptomatic treatment is recommended.

In case of Emergency Call Toll free No. 0800720021 / 0800730030 (24 hrs)

NOTICE TO USER: This pest control product is to be used only in accordance with the directions on this label. It is an offence under the Pest Control Products Act to use or store a pest control product under unsafe conditions.

SELLER'S GUARANTEE (WARRANTY): Seller's guarantee is limited to the terms set out on the label and subject thereto, the buyer assumes the risk to persons or property arising from the use of this product and accepts the product on that condition.