



WHO CLASS IV

# COSAVET<sup>®</sup> 80DF

FUNGICIDE



Guarantee: **Sulphur 80% w/w**  
Formulation: **Dry Flowable**  
Classification: **Multi-site inorganic fungicide**



## General Description

COSAVET 80F is a sulphur-based fungicide formulated into dispersible granules. COSAVET offers easy and safe application on most crops, primarily for the control of powdery mildew, scab and leaf spots on flowers, vegetables, vines and fruit trees.

## Features

- Superior formulation (water dispersible granules of micronized Sulphur)
- Source of Sulphur nutrient to plants
- Readily disperses in water; suspends for long periods, and spreads evenly on leaves
- No need to prepare paste or slurry
- Long term and effective control
- Secondary advantages of reducing mite populations and supplying nutrients to crops.

## Mode of Action

Non-specific thiol reactant, inhibiting respiration. Non-systemic protective fungicide with contact and vapour action.

*Each COSAVET granule is made up of thousands of coated sulphur particles of 1-8 microns. The smaller particles (1-4 microns) are drawn quickly into the fungal cells or vapourize rapidly for immediate effect. The larger particles (4-8 microns) break down more slowly –giving residual control.*

## Recommended Application Rates

| Crop  | Rates                        |          | Interval  |
|---|------------------------------|----------|-----------|
| Flowers e.g. Roses                          | Powdery mildew<br>40-60g/20L | 2-3kg/ha | 7-10 days |
| Vegetables, e.g French beans, Karella, etc. | 40-60g/20L                   | 2-3kg/ha | 7-10 days |
| Coffee                                      | 40-80g/20L                   | 2-4kg/ha | 7-10 days |
| Citrus                                      | 40-160g/20L                  | 2-8kg/ha | 7-10 days |

**Pre-harvest Interval:** 1 day for open air crops, 3 days greenhouse crops.

## Other Suggested Uses

Control of powdery mildews and scab on a wide range of crops, including **Cashew nut, fruit trees (e.g. citrus), vines, ornamentals and many vegetables.**

**Phytotoxicity:** Care should be taken when applying to cucurbits and other 'sulphur-shy' varieties. Some crops are also sensitive to sulphur during flowering.

**Compatibility:** Do not tank-mix with oil, or spray within 3 weeks of an oil spray.



Powdery mildew (Roses)



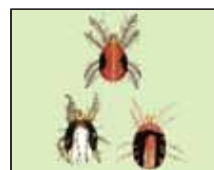
Powdery mildew (Roses)



Powdery mildew (Tomato)



Scab (Leaf & fruit)



SpiderMites

## Osho Chemical Industries Ltd.

**Industrial Area Office:** Osho Complex, Sasio Rd. off Lunga lunga, Industrial Area

**Postal Address:** P. O. Box 49916 - GPO 00100 Nbi-Kenya

**Pilot Line:** (+254) 020 391 2000, (+254) 0711-045 000, (+254) 0733-880 480

**Customer Service:** (+254) 020 391 2500, (+254) 0711-045 500 **Fax:** (+254) 020 3912600, (+254) 0711-045 600

**E-mail:** oshochem@oshochem.com **Website:** www.oshochem.com

