



BIO DEWCON®

Biological Fungicide



Guarantee: **Ampelomyces quisqualis 2%**
Formulation: **Wettable powder**
Classification: **Microbial bio-Fungicide**

General Description

DESCRIPTION: BIO-DEWCON is a talc-based biological fungicide with spores and mycelial fragments of *Ampelomyces quisqualis*, a naturally occurring hyperparasite antagonistic fungus for control of powdery mildew.

Mode of Action

Germinating spores suppress the development of powdery mildew by hyperparasitism at a minimum relative humidity of 60%. Once inside the pathogen hyphae (2-4hrs). *Ampelomyces quisqualis* grows intracellularly leading to cessation in development of powdery mildew.

Features and Benefits

- Ecofriendly and Maintain the ecological balance
- It does not create resurgence, resistance, resurgence and residues problem.
- Natural enemies are not affected and it offers a long lasting pest control.
- Bio-Power is certified by IMO and EUREPGAP for use in organic agriculture
- It is ideal for incorporation in IPM programmes.

Recommended Application Rates

CROP	DISEASE	RATE
Flowers e.g roses	Powdery mildew	2.5 - 3 kg / ha
Snow peas	Powdery mildew	(50 - 60g / 20L) 2.5 - 3 kg / ha
Cucurbits	Powdery mildew	(50 - 60g / 20L) 2.5 - 3 kg / ha

PRE HARVEST INTERVAL: 0 days **RE-ENTRY INTERVAL:** 0 days

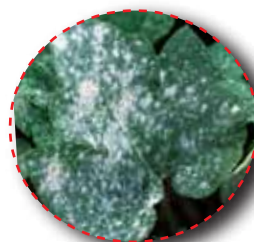
Compatibility: BIO DEWCON is compatible with Mancozeb carberdazim and copper ox-chloride. It can be tank mixed and applied together with insecticides and above fungicides. Other may affect conidial spores in BIO-DEWCON. It is recommended to wait for a minimum of 48 hours between a BIO-DEWCON application and a fungicides treatment. Do not tank mix BIO-DEWCON with other than the ones mentioned here.



Powdery mildew(Rose)



Powdery mildew(Snow peas)



Powdery mildew(Cucurbits)

Osho Chemical Industries Ltd.

Industrial Area Office: Osho Complex, Sasio Rd. off Lunga Lunga, Industrial Area

Postal Address: P. O. Box 49916 - GPO 00100 Nbi-Kenya

Pilot Line: (+254) 020 391 2000, (+254) 0711-045 000, (+254) 0733-880 480

Customer Service: (+254) 020 391 2500, (+254) 0711-045 500 Fax: (+254) 020 3912600, (+254) 0711-045 600

E-mail: oshochem@oshochem.com Website: www.oshochem.com

