



# ANIMATIC<sup>®</sup> COPPER SULPHATE

molluscicidal

## Multi-actions:

caustic

caustic

haemostatic

fungicidal

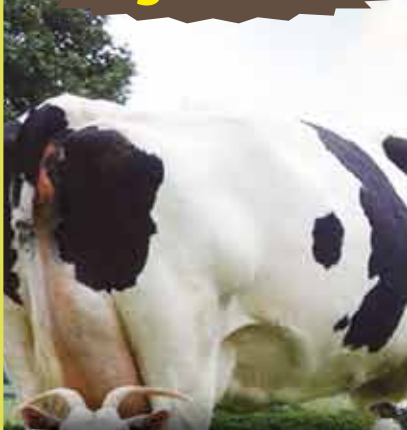
### Topical Uses:



- **Wounds and Ulcers:** 0.1 – 5% antiseptic solution
- **Ringworms:** Mix 5 – 10 gms of copper sulphate in 100 mls of water. Apply the solution to the lesions and scrub daily until they are cured.
- **Foot bath for foot rot:** 5 – 10% solution twice daily for prevention and treatment of foot rot in sheep and cattle
- **Prevention of post-dipping lameness in sheep:** 0.03% solution is added to the dipping bath. Combination with iron sulphate and zinc sulphate to form a dressing in case of canker of the horse foot
- **Proliferative dermatitis, excessive granulation tissue, non-parasitic eczema and dermatosis:** • 0.1 - 2% solution
- **Caustic powder to warts**
- **Skin Ulcerative Wounds and necrotic lesions:** Remove dead tissues and debris first, then dust at a concentration of 5ppm twice a day
- **Foot lesions in FMD cases:** Wash with a disinfectant solution, then apply a mixture of copper sulphate and tar at a ratio of 1: 10 respectively

antiseptic

algaecidal



### Internal Uses:

- **Severe scouring in cattle due to excess molybdenum in pasture grass:** Give daily 2 gm/cow and 1 gm/young animal, during grazing period as a drench or dietary supplement. Not to be given to calves while on milk or milk substitutes
- **Swayback prevention in lambs:** The pregnant ewes in the affected areas are given copper sulphate, as a drench during gestation : 1.5 gm per animal at 8 weeks, and then at 4 weeks before lambing
- **Copper deficient areas:** Add at a rate of 0.5% to the salt/mineral supplement
- **Rabbits:** Improvement of growth performance (anabolic effect), reduction of enteritis losses and damage due to calcinosis: 200 ppm in feed.
- **Feed Additive:** As a production enhancer for dairy cattle and goats: Mix 250 gm/kg feed, then give a dose up to 2 gm per animal (0.5 – 2 gm)
- **Aspergillosis, trichomoniasis and hexamitiasis in turkeys:** 1:2000 solution with drinking water for 3 -5 days
- **Trichomoniasis in Ostrich:** 500 -700 gm/litre of drinking water or 1 gm per kg of feed.
- **Antidote for phosphorous poisoning:** Acts by forming an insoluble precipitate when given as 0.2 – 1 % solution

#### Other Uses:

- **Fungicidal and Algaecidal:** (0.5 – 1) ppm for reservoirs, ponds, dipping baths and swimming pools
- **Potent molluscicide to kill fresh water snails**  
Snails act as intermediate hosts for liver flukes and schistosomes; Mix copper sulphate with sand (1: 4 parts respectively) and spread over the affected areas at a rate of 4kg/1000 square metres, two applications in a year is sufficient.

## OSHO CHEMICAL INDUSTRIES LTD.

Industrial Area Office: Osho Complex, Sasio Rd. off Lunga Lunga, Industrial Area

Postal Address: P. O. Box 49916 - GPO 00100 Nbi-Kenya

Pilot Line: (+254) 020 391 2000, (+254) 0711-045 000,

Customer Service: (+254) 020 391 2500, (+254) 0711-045 500

Fax: (+254) 020 3912600

E-mail: oshochem@oshochem.com

Website: www.oshochem.com

#### Presentation:

Pouches of 100 gms, 250 gms and 500 gms