

# ANALGON BOLUS

ANIMAL DEWORMER **3000mg & 600mg**



## COMPOSITION:

Each uncoated tablet contains: Albendazole USP 600mg  
Each uncoated tablet contains: Albendazole USP 3000mg

A complete and safe broad spectrum anthelmintic for the treatment and control of gastro-intestinal worms, lung worms, tape worms and liver flukes in cattle, sheep, goats and camels.

## INDICATIONS:

For treatment and control of tapeworms, lungworms, roundworms and liver flukes in cattle, sheep, goats and camels.

## DOSAGE:

Analgon 600:

Gastro intestinal worms and lungworms in cattle: 1 bolus per 100kg. Body wt.  
Liver flukes: 2 boli per 100kg. Body wt.

Analgon 3000:

For round and tapeworms; Cattle / Camel / Horse: 1 bolus per 300kg. b.wt  
For liver flukes; Cattle / camel / Horse: 2 bolus per 300 kg. b.wt

## WITHDRAWAL PERIODS:

Meat for human consumption: 14 days  
Milk for human consumption: 3 days

## PRESENTATION:

3000mg Bolus and 600mg Bolus



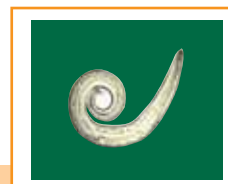
Round worm



Tapeworms



Liver fluke



Lung worm

**WOCKHARDT**

Quality at an affordable price!



**ANIMATIC**

**osho**

## Osho Chemical Industries Limited

Industrial Area Office: Osho Complex, Sasio Rd. off Lunga lunga, Industrial Area Postal Address:  
P. O. Box 49916 - GPO 00100 Nbi-Kenya  
Pilot Line: (+254) 020 391 2000, (+254) 0711-045 000, Customer Service: (+254) 020 391 2500, (+254) 0711-045 500  
Fax: (+254) 020 3912600 E-mail: oshochem@oshochem.com Website: www.oshochem.com

# ANALGON BOLUS

ANIMAL DEWORMER

**3000mg & 600mg**

Animals – cattle, sheep, goats and camels.

Treatment and control of roundworms, lungworms, tapeworms and liver flukes mainly in cattle, sheep and goats.

## Dosage;

Analgon 600:

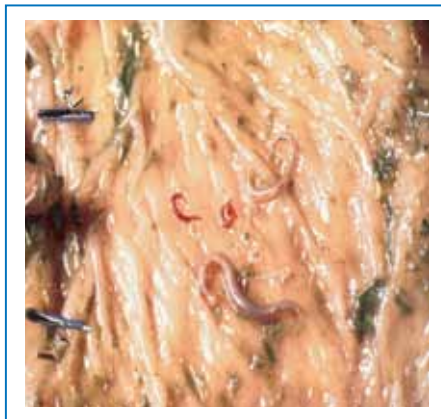
Gastro intestinal worms and lungworms in cattle: 1 bolus per 100kg. Body wt.

Liver flukes: 2 boli per 100kg. Body wt.

Analgon 3000:

For round and tapeworms; Cattlemin / Camel / Horse: 1 bolus per 300kg. b.wt

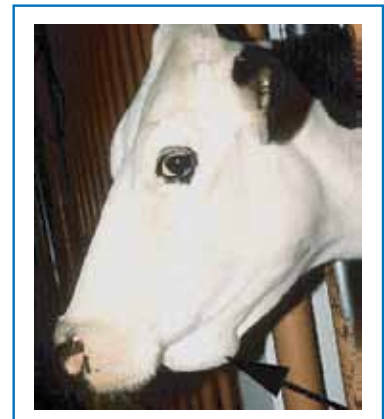
For liver flukes; Cattle / camel / Horse: 2 bolus per 300 kg. b.wt



Worms in the intestines of an animal



Pale mucus membranes



Bottle jaw



## Osho Chemical Industries Limited

Industrial Area Office: Osho Complex, Sasio Rd. off Lunga lunga, Industrial Area Postal Address:

P. O. Box 49916 - GPO 00100 Nbi-Kenya

Pilot Line: (+254) 020 391 2000, (+254) 0711-045 000, Customer Service: (+254) 020 391 2500, (+254) 0711-045 500

Fax: (+254) 020 3912600 E-mail: oshochem@oshochem.com Website: www.oshochem.com



ANIMATIC

